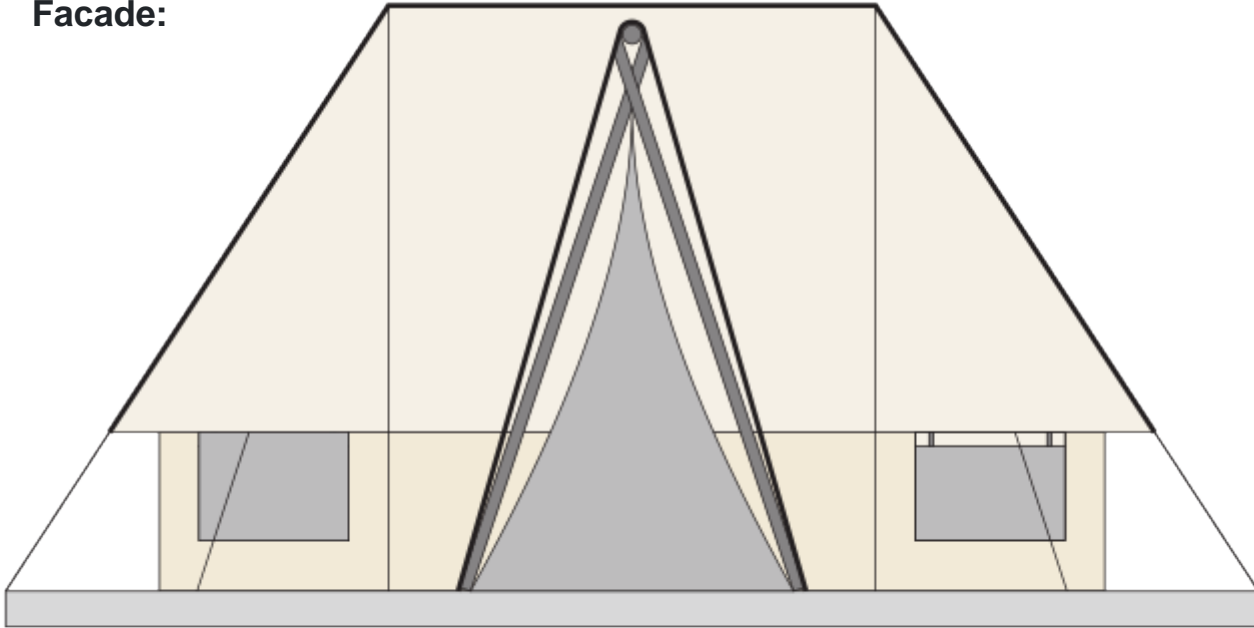




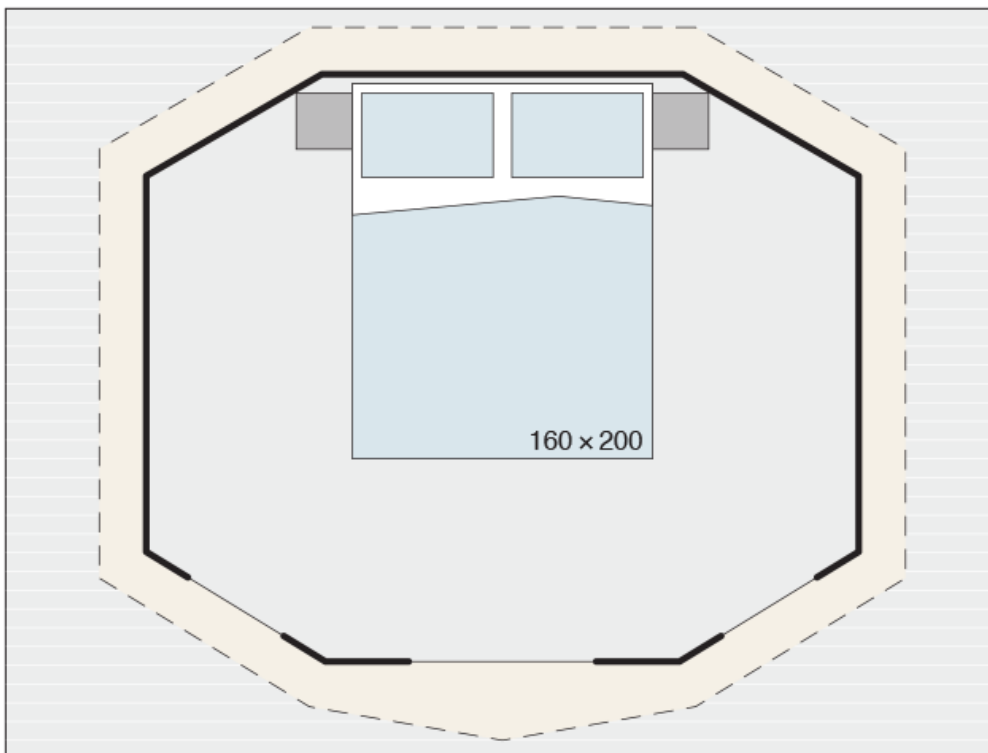
# Bell S COUPLE

**Facade:**



**Bell S fasada**

**Layout:**



**Bell S Couple**

**A1 GENERAL**

Length interior/exterior	2,3/4,3
Width interior/exterior	3,4/5,4
Height interior/exterior	2,15/2,48
Area	7,82
Number of beds	2
Number of bedrooms	1
Number of bathrooms	-
Kitchen	-
Transport length	2,15
Transport width	1,85
Transport height	0,9

**B1 CHASSIS**

Leveling Feet	O, 1-2%
Anchoring Kit - Steel rod	O
Anchoring Kit - Steel ancor	O

**B2 FLOOR**

Carpet	O
Pinewood boards floor	X
Larchwood boards floor	O

**B3 EXTERIOR WALLS**

Construction poles Pinewood KVH 60 x 100	X
Roof canvas TenCate Solair KA46 420g/m2	X
Roof canvas TenCate Campshield FR1 420g/m2 (FR)	O
Interior canvas TenCate Cotton KD24 340g/m2	X
Interior canvas TenCate Campshield FR2 290g/m2 (FR)	O
Window with mosquito net	X
Front entrance opening section on zipper	X
Mosquito net for entrance opening	X
Pad lock system	O
Master key for pad lock system	O
Winter cover	O

**C0 INTERIOR**

Furnishing Decor	TENT
Mosquito net for beds	O

**C3 MASTER BEDROOM**

Double bed with slatted bed base	160 x 200
Foam mattresses (25 kg/m <sup>2</sup> )	X
Topper for mattresses	O
Bedside tables	X

**D2 ELECTRICITY**

External connector 16A, 250V, 2P+E	X
Reading LED lights in all rooms	X
USB socket	O

**D4 HEATING AND COOLING**

Air-conditioning - mono split	O
-------------------------------	---

**E1 EXTERIOR EQUIPMENT**

Canopy over entrance	X
Terrace larchwood small	O, 200x100cm
Terrace larchwood large	O, 200x185cm
Lounge furniture with two chairs and coffee table	O
Sun loungers (2 pcs)	O

### Legal Notice

The information on this website is provided "as is" and without warranty of any kind, expressed or implied, including (but not limited to) any implied warranties of merchantability and non-infringement of third party rights. While the information provided is believed to be accurate, it may include errors or inaccuracies. In no event shall Adria Home be liable to any person for any special, indirect or consequential damages relating to this material, unless caused by gross negligence or intentional misconduct. The purpose of this website is illustrative. The website may show visuals which may include some elements not belonging to the standard equipment or portray products which may not be available in all markets. Products may change in terms of technical specification and commercial details and in relation to specific regulations. You are advised to always contact your selected Adria representative to obtain all detailed information prior to purchasing.

### Copyright

Copyright © Adria Home Ltd., ?rnatelj, Slovenia 2019-20. All rights reserved. The text, images, graphics, sound files, animation files, video files, and their arrangement on the Adria Home website are all subject to copyright and other intellectual property protection. These objects may not be copied for commercial use or distribution, nor may these objects be modified or reposted to other sites. Adria Home website may contain images whose copyrights are attributable to third parties.



Adria Home Ltd.  
Kanižarica 41, SI-8340 ?rnatelj, Slovenija, Tel: +386 (0) 7 35 69 100, E-mail: info@adria-mobilehome.com  
[www.adria-mobilehome.com](http://www.adria-mobilehome.com) , [www.adria-holidays.net](http://www.adria-holidays.net)

#AdriaHome  
#AdriaGlamping

